

# Holiday Inn Resort Phuket

## Main Wing

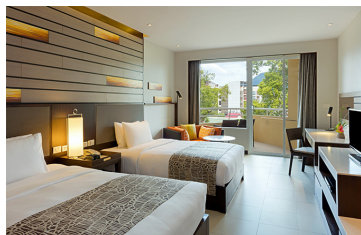
Located in the heart of Patong, just steps away from Phuket's famous beach, Holiday Inn Resort Phuket is an oasis within walking distance to key shopping centres, restaurants and bars, and Soi Bangla nightlife. The contemporary designed Main Wing is popular for Kids and family-friendly rooms and facilities.



### 1 King Bed Standard Room 33 sq.m.

**Maximum of 2 adults and 2 kids below 12 years old**

- 110 king rooms with bed size 195 × 200 cm. and a sofa
- Patong city view
- Choice of a bathtub or larger walk-in shower



### 2 Double Beds Standard Room 33 sq.m.

**Maximum of 2 adults and 2 kids below 12 years old**

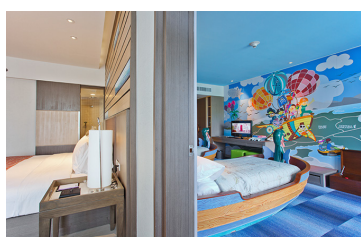
- 115 twin rooms with 2 double bed size 140 × 200 cm. and a sofa
- Patong city view
- Choice of a bathtub or larger walk-in shower



### 1 King 1 Bunk Bed Standard Family Room 33 sq.m.

**Maximum of 2 adults and 2 kids below 12 years old**

- 6 king rooms with bed size 195 × 200 cm.
- Kids corner with bunk beds size 90 × 180 cm.
- Separate kids area with TV, PS4 and toy box



### 1 King 2 Single 2 Bedrooms Family Suite 66 sq.m.

**Maximum of 2 adults and 2 kids below 12 years old**

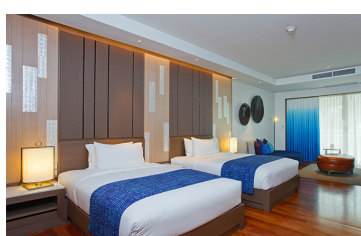
- 10 king rooms with a bed size 195 × 200 cm. connected to 2 beds in boat or turtle form size 90 × 180 cm.
- Pirate or Sea World themed Kids' room
- Kids room with their own bathroom, TV, PS4, and toy box



### 1 King Suite Pool View Furnished Balcony 55 sq.m.

**Maximum of 2 adults**

- 12 king rooms with bed size 240 × 200 cm. and a single daybed
- Spacious balcony overlooking the Main Wing swimming pool
- Oversized bathroom with both bathtub and shower
- Complimentary daily replenishment of the minibar
- Complimentary **illy** espresso machine and coffee



### 2 Double Suite Pool View Furnished Balcony 55 sq.m.

**Maximum of 2 adults**

- 4 twin rooms with two double bed size of 140 × 200 cm. and a single daybed
- Spacious balcony overlooking the Main Wing swimming pool
- Oversized bathroom with both bathtub and shower
- Complimentary daily replenishment of the minibar
- Complimentary **illy** espresso machine and coffee



### 1 King 1 Bedroom Suite Sea View Balcony 120 sq.m.

**Maximum of 2 adults**

- Separate bedroom and living areas with a king-size bed of 195 × 200 cm.
- Private sea-facing terrace with sun loungers
- Generous bathroom with both bubble tub and rain shower and a walk-in dressing room
- Complimentary daily replenishment of the minibar
- Complimentary **illy** espresso machine and coffee

#### In-Room Amenities

- Slipper and bathrobe are on request
- Flat-screen TV
- Iron and ironing board
- Hairdryer
- Minifridge (No-compressor)
- Private balcony
- Free Wi-Fi
- In-room safe

# Holiday Inn Resort Phuket

## Busakorn Premium Wing

*Elevate your stay to fabulous "resort within the resort" Busakorn Premium Wing experience to enjoy exclusive access to the two stunning Busakorn Premium swimming pools, as well as full use of all the facilities of the Main Wing.*

### 1 King Premium City View Balcony 42 sq.m.

**Maximum of 2 adults and 1 kid below 12 years old**

- 13 king rooms with a king-size bed (195 × 200 cm).
- Daybed (75 × 150 cm).
- 43" flat-screen TV, private dressing area, separate walk-in shower, and toilet room.

### 1 King Premium Pool View Balcony 42 sq.m.

**Maximum of 2 adults and 1 kid below 12 years old**

- 46 king rooms with a king-size bed (195 × 200 cm).
- Daybed (75 × 150 cm).
- 43" flat-screen TV, private dressing area, separate walk-in shower, and toilet room.


### 2 Single Premium Pool View Balcony 42 sq.m.

**Maximum of 2 adults and 1 kid below 12 years old**

- 28 twin rooms with two double beds (125 × 200 cm).
- Daybed (75 × 150 cm).
- 43" flat-screen TV, private dressing area, separate walk-in shower, and toilet room.


### 1 King Premium Pool View Ground Floor 42 sq.m.

**Maximum of 2 adults and 1 kid below 12 years old**

- 12 king rooms with a king-size bed (195 × 200 cm)
- 43" flat-screen TV, private dressing area, separate walk-in shower, and toilet room.
- Complimentary daily replenishment of the minibar.
- Complimentary  espresso machine and coffee.


### 2 Single Premium Pool View Ground Floor 42 sq.m.

**Maximum of 2 adults and 1 kid below 12 years old**

- 5 twin rooms with two double beds (125 × 200 cm)
- 43" flat-screen TV, private dressing area, separate walk-in shower, and toilet.
- Complimentary daily replenishment of the minibar.
- Complimentary  espresso machine and coffee.


### 1 King Premium Villa Pool View Adults Only 50 sq.m.

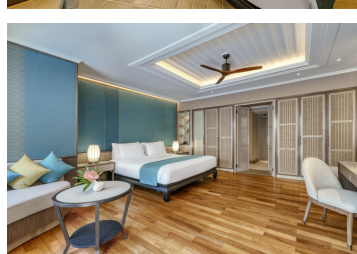
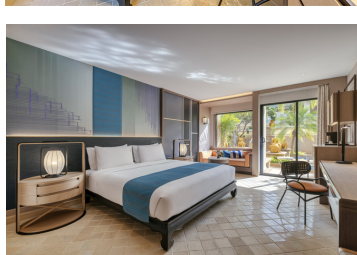
**Maximum of 2 adults only (Aged 18 years old and over)**

- 18 king rooms with a king size 195 × 200 cm.
- 55" flat screen TV, private dressing area, separate walk-in shower, and toilet room
- Separate walk-in shower, and toilet room
- Complimentary daily replenishment of the minibar
- Complimentary  espresso machine and coffee

### 1 King Premium Villa Pool Access Adults Only 50 sq.m.

**Maximum of 2 adults only (Aged 18 years old and over)**

- 18 rooms with a king-size bed (195 × 200 cm)
- 55" flat-screen TV, private dressing area, separate walk-in shower, and toilet room.
- Complimentary daily replenishment of the minibar.
- Complimentary  espresso machine and coffee.



#### In-Room Amenities

- Flat-screen TV
- Access to all Main Wing facilities
- Tea & coffee-making facilities
- Iron and ironing board
- Hairdryer
- Minifridge (No-compressor)
- Private balcony
- Free Wi-Fi
- In-room safe
- Radio alarm clock



**IHG** HOTELS & RESORTS



# Holiday Inn Resort Phuket

## Facilities

*The Holiday Inn Resort Phuket pairs the excitement of Patong Beach with adrenalin-fuelled leisure activities.*



### Main Wing Pool

**Opening times:** 08:00 - 19:00 hrs.

- With shaded swim in bubble water features
- Large free-form pool with a depth of 1.20 m.



### Busakorn Premium Wing Pool

(exclusive access for only Busakorn Premium Wing guests)

**Opening times:** 08:00 - 19:00 hrs.

- Large tropical free-form pool with a swim-up bar.
- Pool depth: 1.20 m.



### Main Wing Kids Pools

**Opening times:** 09:00 - 17:00 hrs.

- Family pool with a depth of 1.00 m and a separate toddler pool with a depth of 0.40 m.



### FunLAB

**Opening times:** 12:00 - 20:00 hrs.

Calling all young explorers to think big, and create something unforgettable.



### Kids Club & Playground

**Opening times:** 09:00 - 17:00 hrs.

- Free entry for children aged 5 - 12 years old.
- Children's activities: Videos, games, and arts & crafts.



### Splash Zone

**Opening times:** 09:00 - 19:00 hrs.

- A shallow pool with a colourful splash pad water play area for kids.
- Pool depth: 0.15 m.



### Fitness Centre

**Opening times:** 24-hour service

Hotel fitness centre is provided access to hotel guests only.

## Meeting Rooms



Taksina room 1, 2, or 3	8 x 12.5 x 3.4 m	10	15	30	30	40
Taksina room 1 - 3	24 x 12.5 x 3.4 m	50	60	120	120	150



# Holiday Inn Resort Phuket

## Dining

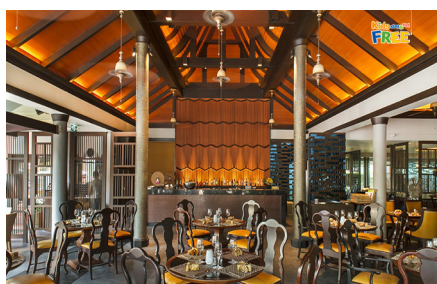
*Tantalize your taste buds with a selection of Thai and international cuisine in Patong with a choice of four restaurants and bars.*



### Sea Breeze Café & Terrace

*Overlooking the Main Wing pool in bright & friendly vibes, the restaurant is best known for its extensive buffet breakfast.*

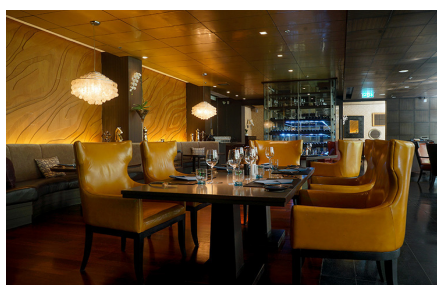
**Location:** Main Wing  
**Cuisine:** Buffet breakfast  
**Seating capacity:** 152 seats  
**Breakfast times:** 06:30 - 11:00 hrs



### Charm Thai Restaurant

*Great value Thai food and best breakfast buffet.*

**Location:** Busakorn Premium Wing  
**Cuisine:** Thai Food  
**Seating capacity:** 112 seats  
**Opening times:** 06:30 - 23:00 hrs (last order: 22:30 hrs)  
**Breakfast times:** 06:30 - 11:00 hrs.



### Sam's Steaks & Grill

*Best steak in town, limited seating offers with a romantic atmosphere for a special night out*

**Location:** Main Wing  
**Cuisine:** Steaks  
**Seating capacity:** 34 seats  
**Operating times:** Daily  
**Opening times:** 18:00 - 23:00 hrs. (last order: 22:30 hrs.)



### Terrazzo Ristorante & Bar

*A modern Italian restaurant with open kitchen and a pizza brick oven*

**Location:** Main Wing  
**Cuisine:** Italian menu  
**Seating capacity:** 130 seats  
**Live music:** Monday to Saturday from 18:30 hrs. to 22:30 hrs.  
**Opening times:** 12:00 - 23:00 hrs. (last order: 22:30 hrs.) daily.



### Grab & Go

*Start your day or recharge anytime with freshly brewed Thai and Italian coffee and grab your favourite food.*

**Location:** Main Wing  
**Opening times:** 7:00 - 20:00 hrs.

